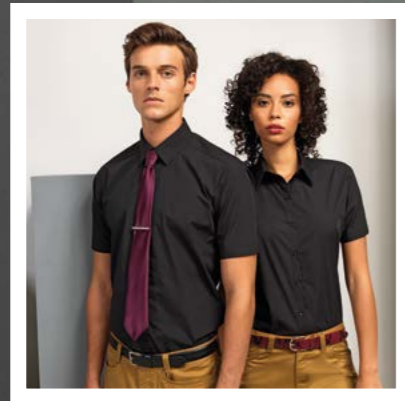
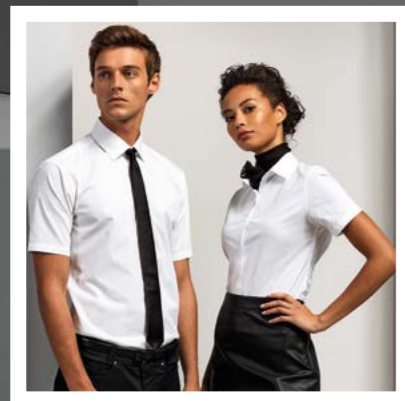


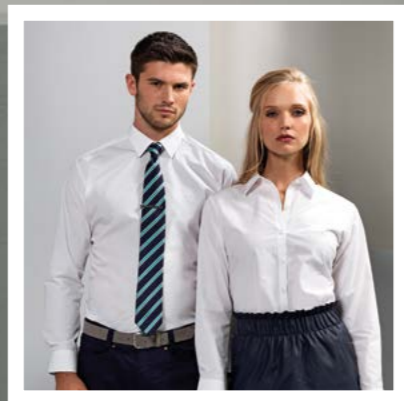
PR204 Men's Long Sleeve Slim Fit Poplin Shirt*
PR305 Ladies' 3/4 Sleeve Poplin Shirt*



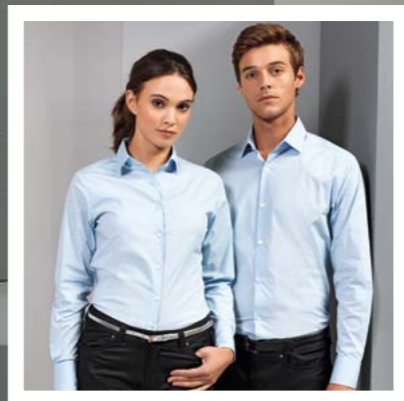
PR209, PR309 Short Sleeve Supreme Poplin Shirt



PR246, PR346 Short Sleeve Stretch Fit Poplin Shirt



PR207, PR307 Long Sleeve Supreme Poplin Shirt



PR244, PR344 Long Sleeve Stretch Fit Poplin Shirt



PR200, PR300 Long Sleeve Poplin Shirt



PR202, PR302 Short Sleeve Poplin Shirt

UP TO
30
COLOURS



**POPLIN COLLECTION
COLOUR CARD**

IN UP TO 30 COLOURS

*available in Black, Dark Grey, Light Blue, Purple, Red, Royal, Silver and White
(PR305 not available in Purple)

THE ORIGINAL POPLIN SHIRT

PR200, PR202,
PR300, PR302, PR305*

MEN'S SLIM FIT POPLIN SHIRT

PR204*

ORIGINAL AND SLIM FIT POPLIN SHIRT
65% Polyester, 35% Cotton
Colours 105gsm, White 115gsm



Sapphire
2144C



Royal*
7686C



Lilac
2085C



Hot Pink
215C



Strawberry Red
199C



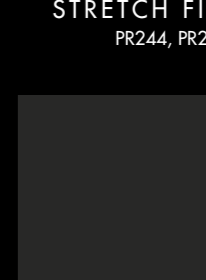
Lime
2302C



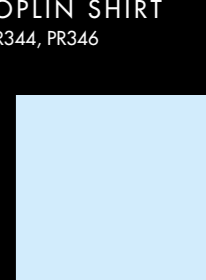
Natural
4755C



Silver*
429C



Black
(Black C)



Pale Blue
2717C

STRETCH FIT POPLIN SHIRT
PR244, PR246, PR344, PR346



Turquoise
7703C



Mid Blue
2135C



Rich Violet
7477C



Burgundy
209C



Sunflower
7411C



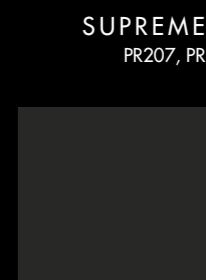
Emerald
7728C



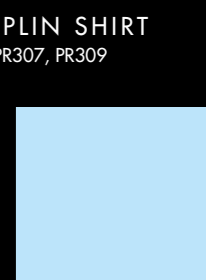
Mocha
7615C



Dark Grey*
425C



Black
(Black C)



Light Blue
2707C

SUPREME POPLIN SHIRT
PR207, PR209, PR307, PR309



Light Blue*
2707C



Navy
533C



Aubergine
7449C



Red*
201C



White*
(White C)



Aqua
344C



Brown
4975C



Black*
(Black C)



White
(White C)

Premier uses the Pantone Coated system as a guide.
Fabric colour may vary slightly from the Pantone
number given.