

## PR623 Women's Lined Polyester Waistcoat

### Description

This ladies' waistcoat comes with a four button fastening down the front with two functional watch pockets to the sides. Fully lined and with a satin-feel back, this waistcoat features a buckle so the wearer can adjust the fit.

### Product Features:

- Satin-feel back with adjuster
- Two functional watch pockets
- Four button fastening
- Fully lined

### Available In:

2XS, XS, S, M, L, XL, 2XL

### Certifications:

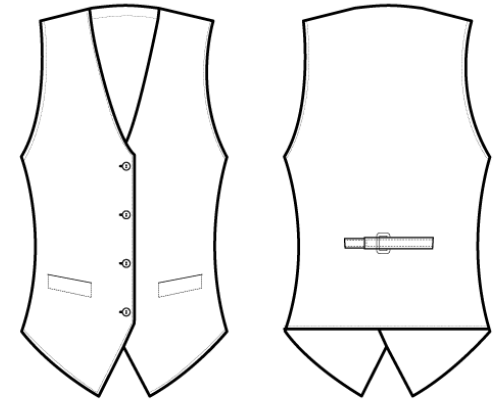


### Colours:

Colour	Pantone	C	M	Y	K
Black	Black c	0	0	0	100

### Fabric:

100% Polyester Plain Weave, 185gsm.



### Suggested Decoration:

Screen Print, Transfer Print, Embroidery

### Country of Origin:

China

### Commodity Code:

6211 43 1000

### Features:



### Wash Care:



### Carton Information:

Sizes	Carton	Pack	SKU's	Carton Weight	Carton Dimensions
All Sizes	24	6	7	10kg approx.	60cmx40cmx22cm

### Garment Sizes:

Call size	2XS	XS	S	M	L	XL	2XL
Bust to fit"	27	29	32	34	37	40	44
Bust to fit cm	68	72	80	86	94	101	112
Bust actual cm	72	80	88	96	104	112	120
Back length cm	55	55	55	55	55	55	55